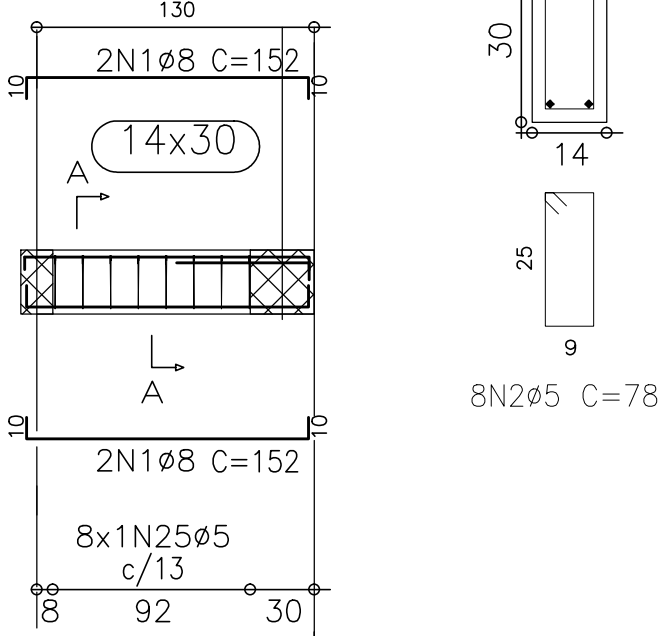
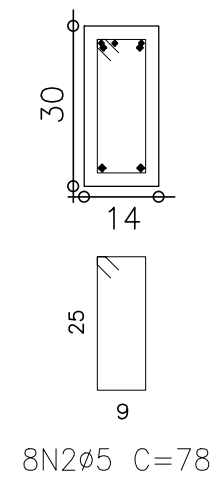


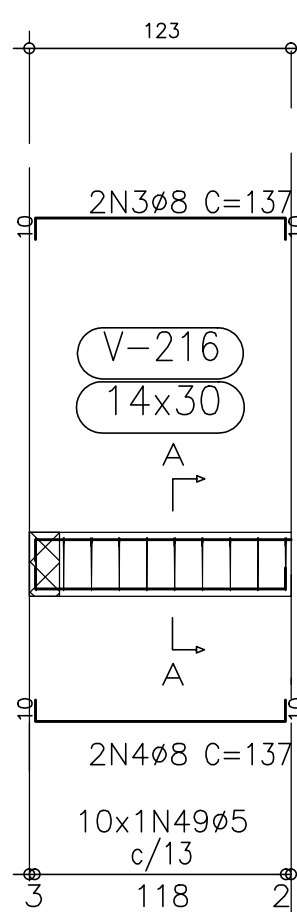
V 1 = V 2
Escala 1:50



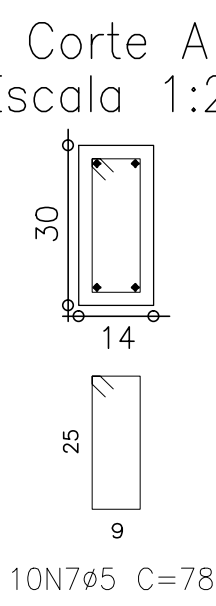
Corte A
Escala 1:20



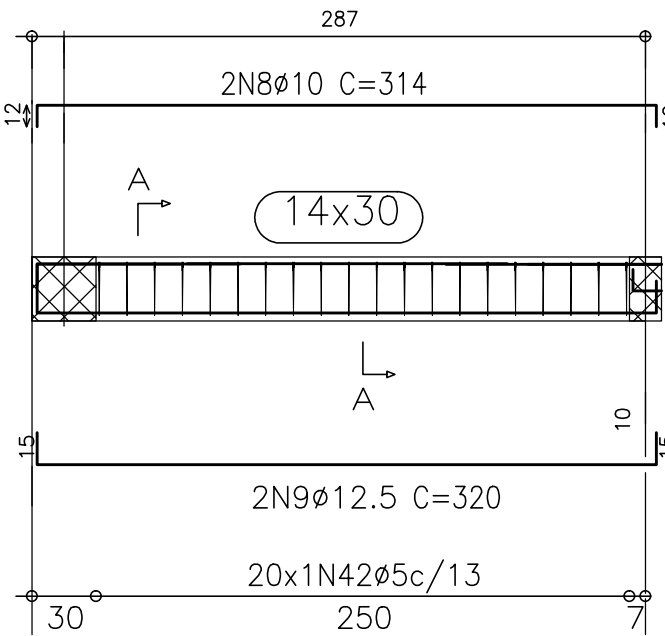
V 3
Escala 1:50



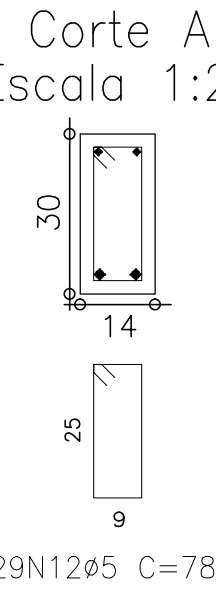
Corte A
Escala 1:20



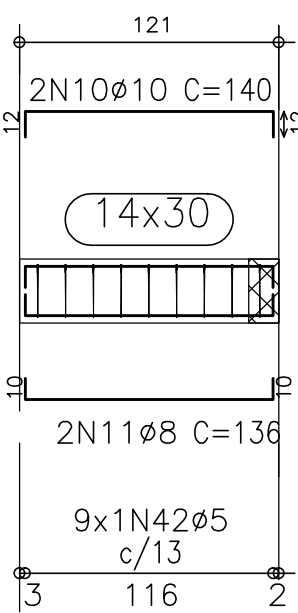
V 4
Escala 1:50



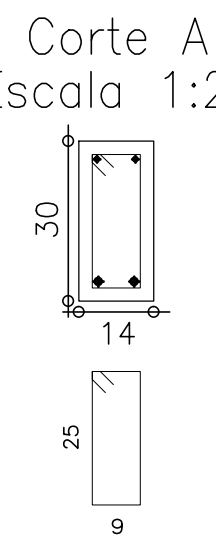
Corte A
Escala 1:20



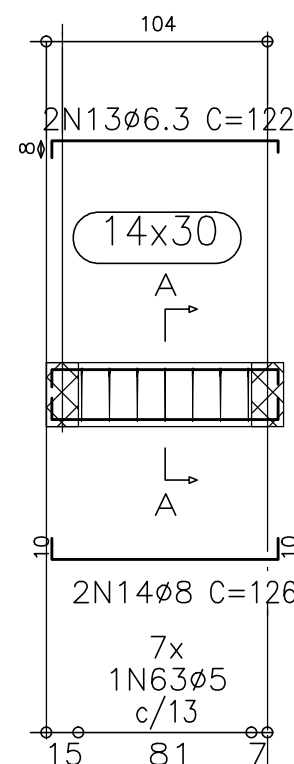
V 5
Escala 1:50



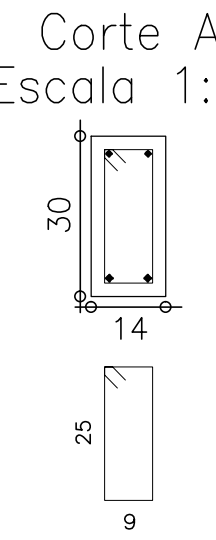
Corte A
Escala 1:20



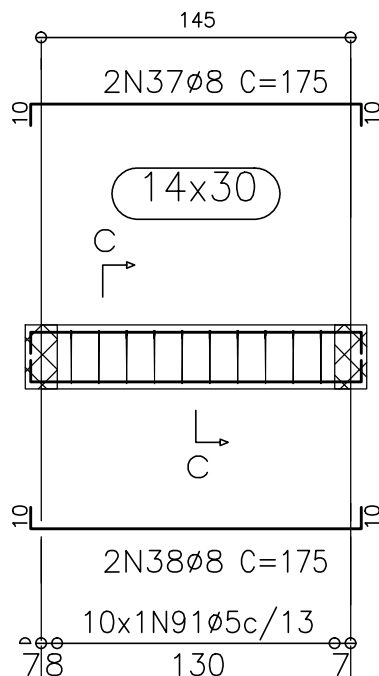
V 6 = V 7
Escala 1:50



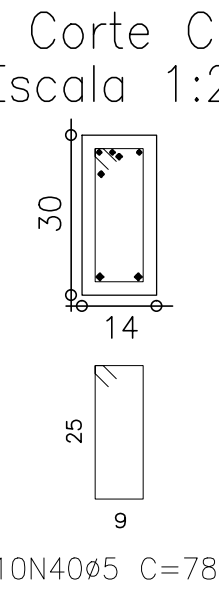
Corte A
Escala 1:20



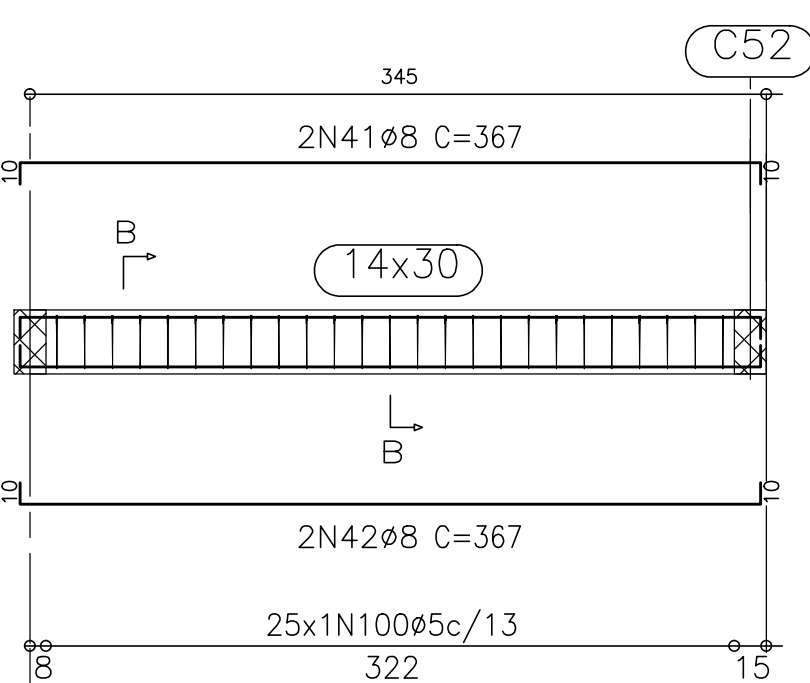
V 8 = V 9
Escala 1:50



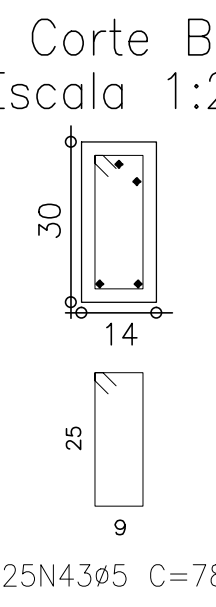
Corte C
Escala 1:20



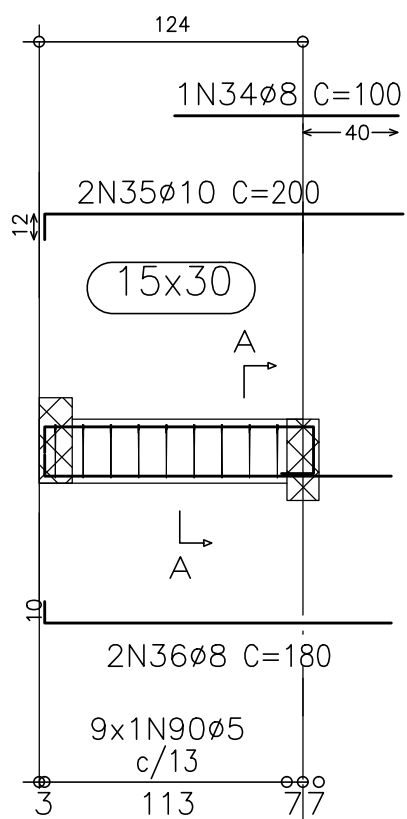
V 10 = V 11
Escala 1:50



Corte B
Escala 1:20

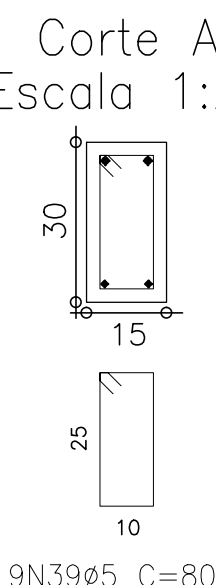


V 12 = V 14
Escala 1:50

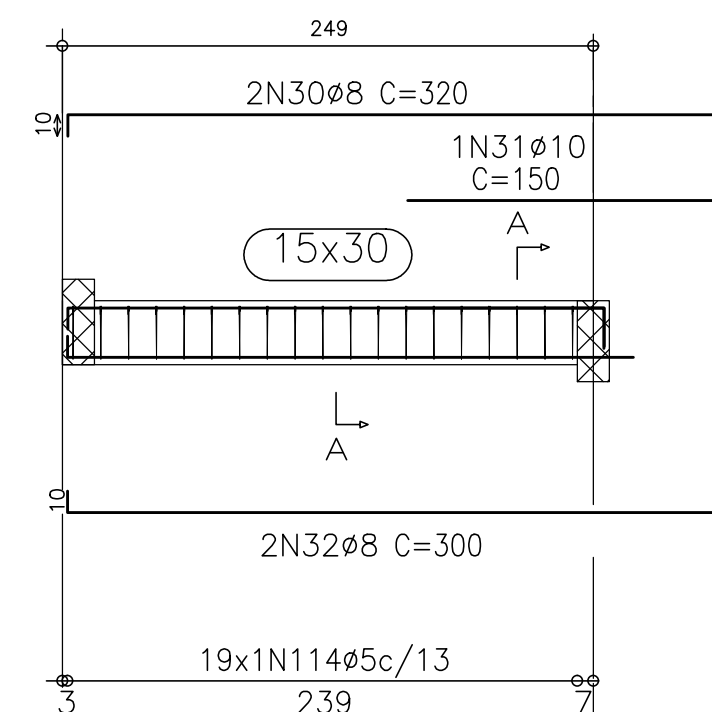


ANCORAR VIGA NA ÚLTIMA FIADA DE BLOCOS TIPO "C" DA PA-41, PREVENDO UMA ANCORAGEM MÍNIMA DE 1,00 m.

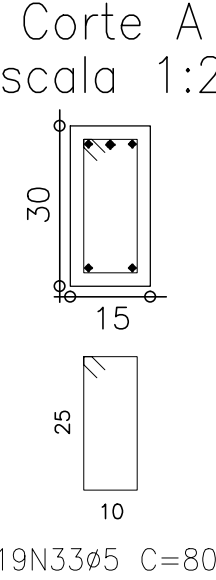
Corte A
Escala 1:20



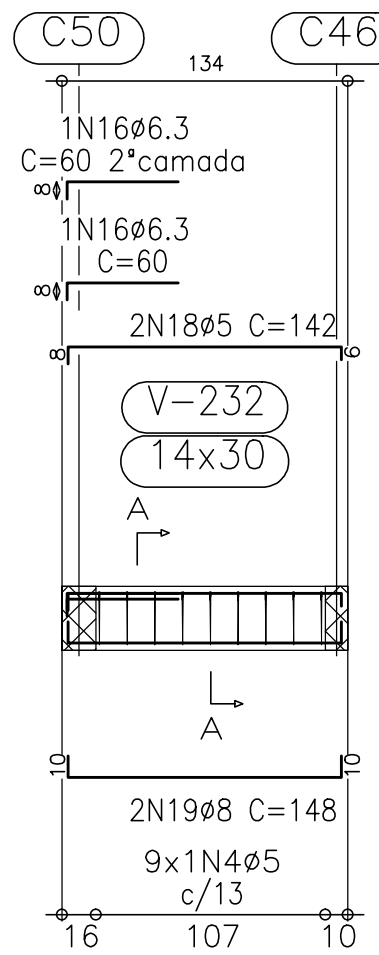
V 13
Escala 1:50



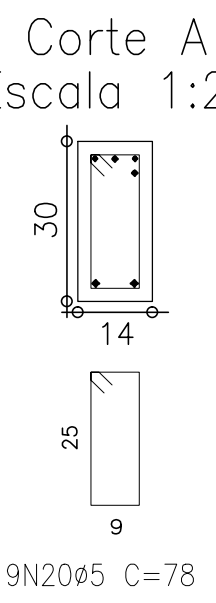
Corte A
Escala 1:20



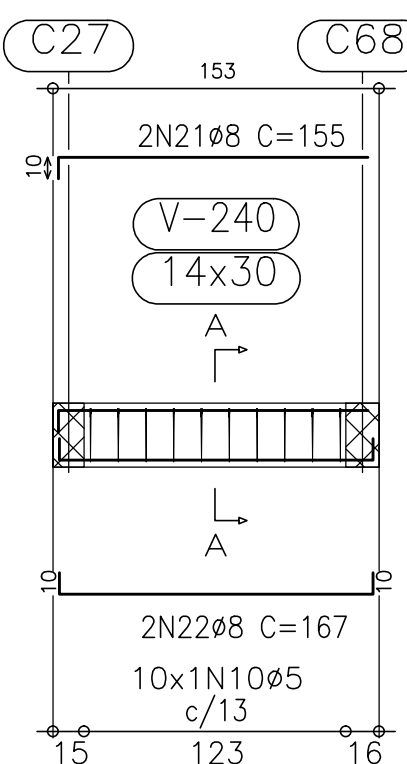
V 15 = V 16
Escala 1:50



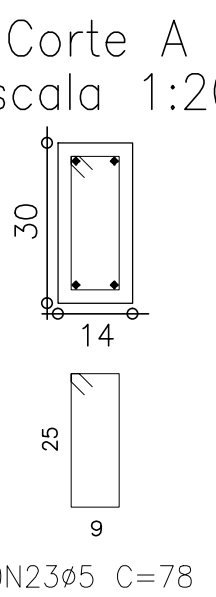
Corte A
Escala 1:20



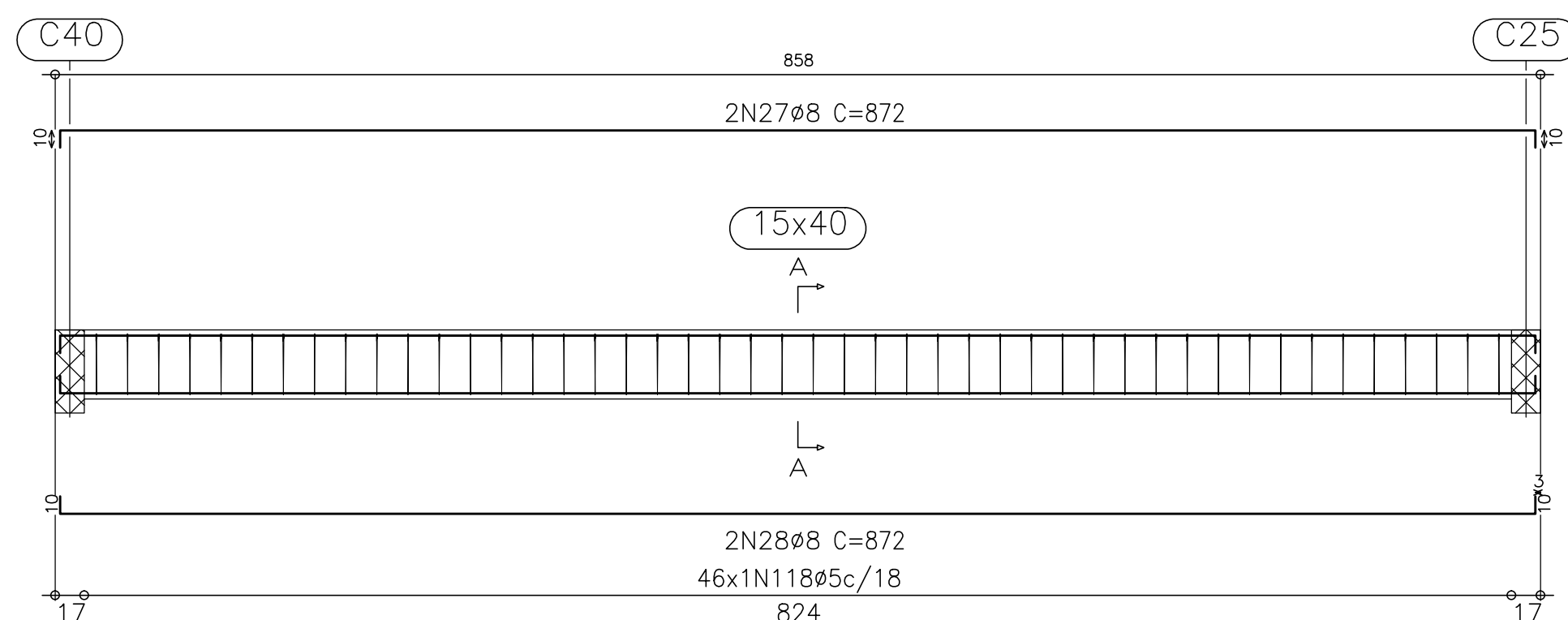
V 17 = V 18
Escala 1:50



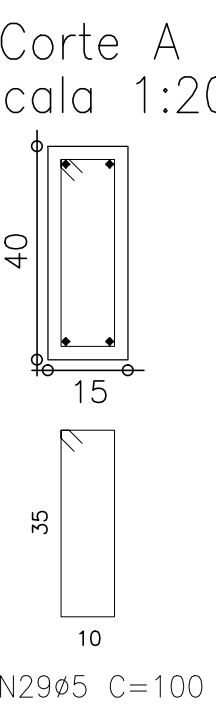
C27 C68
Corte A
Escala 1:20



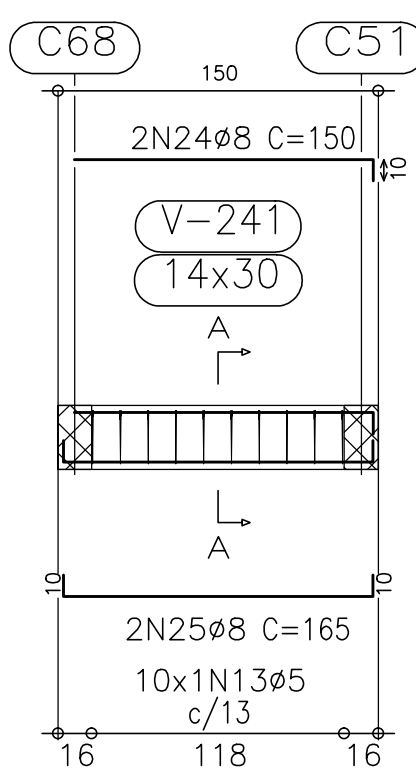
V 21
Escala 1:50



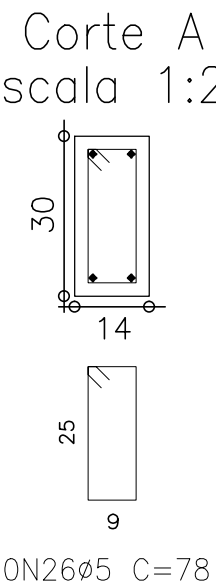
Corte A
Escala 1:20



V 19 = V 20
Escala 1:50



C68 C51
Corte A
Escala 1:20



NOTA:
- ESPESSURA DA ARGAMASSA DE ASSENTAMENTO É DE 1cm, PROIBIDO A EXECUÇÃO DE JUNTA SECA;

Cob. Reserv.	18,85
Reservatório	13,97
Cobertura	11,65
Tipo 3	8,85
Tipo 2	6,05
Tipo 1	3,25
Térreo	0,45
Fundação	Variaável

Corte Esquemático
s/ esc.

Elemento	Pos.	Diam.	Q.	Dob. (cm)	Retd (cm)	Dob. (cm)	Comp. (cm)	Total (cm)	CA-50-A (kg)	CA-60-B (kg)
V 7	1	Ø8	4	10	132	10	152	608	2.2	
	2	Ø5	8					624		1.0
Total+10%									2.2	1.0
V 14	3	Ø8	2	10	117	10	137	274	1.1	
	4	Ø8	2	10	117	10	137	274	1.1	
	6	Ø8	2	20	150	20	190	360	1.5	
	6	Ø8	2	20	150	20	190	360	1.5	
	7	Ø5	10				78	780		1.2
	7	Ø5	10				78	780		1.3
	7	Ø5	8				100	800		
Total+10%									5.7	2.5
V 15	8	Ø10	2	12	290	12	314	628	3.9	
	9	Ø12.5	2	15	290	15	320	640	6.3	
	10	Ø10	2	12	116	12	140	280	0.8	
	11	Ø8	2	10	116	10	136	272	1.1	
	12	Ø5	29				78	2262		3.6
	Total+10%								15.3	4.5
V 18	13	Ø6.3	2	8	106	8	122	244	0.6	
	14	Ø8	2	10	106	10	126	252	1.0	
	15	Ø5	7				78	546		0.9
Total+10%									1.6	0.9
V 23	16	Ø6.3	2	8	52		60	120	0.3	
	18	Ø5	2	8	128	6	142	284		0.4
	19	Ø8	2	10	128	10	148	296	1.2	
	20	Ø5	9				78	702		1.1
Total+10%									1.7	1.7
V 31	21	Ø8	2	10	145	10	155	310	1.2	
	22	Ø8	2	10	147		167	334	1.3	
	23	Ø5	10				78	780		1.2
Total+10%									2.8	1.3
V 32	24	Ø8	2	10	145	10	150	300	1.2	
	25	Ø8	2	10	145	10	165	330	1.3	
	26	Ø5	10				78	780		1.2
Total+10%									2.8	1.3
V 34	27	Ø8	2	10	852	10	872	1744	6.8	
	28	Ø8	2	10	852	10	872	1744	6.8	
	29	Ø5	46				100	4600		7.2
Total+10%									15.0	7.9
V 49	30	Ø8	2	10	310		320	640	2.6	
	31	Ø10	1				150	150	1.0	
	32	Ø8	2	10	290		300	600	3.6	
	33	Ø5	19				80	1520		2.4
Total+10%									7.2	2.4
V 51	34	Ø8	1		100		100	100	0.4	
	35	Ø10	2	12	188		200	400	2.5	
	36	Ø8	2	10	170		180	360	1.5	
	37	Ø8	2	10	155	10	175	350	1.4	
	38	Ø8	2	10	155	10	175	350	1.4	
	39	Ø5	9				80	720		
	40	Ø5	10				78	780		1.1
	Total+10%								7.2	2.3
V 52	41	Ø8	2	10	347	10	367	734	2.9	
	42	Ø8	2	10	347	10	367	734	2.9	
	43	Ø5	25				78	1950		3.1
Total+10%									5.8	3.1
									Ø5:	0.0
									Ø6.3:	0.9
									Ø8:	49.8
									Total:	50.7
										29.9

TIPO 1
Desenho de vigas
Concreto: C25, em geral
Aço: CA-50-A e CA-60-B
Escala vigas: 1:50
Escala seções: 1:20

Concreto $F_{ck} = 25\text{Mpa}$

CABREIRA RODRIGUES
Equipa Técnica
Eng.º Civil Cristian Vitorrei Fernandes
Eng.º Civil Fabricio Ferreira Rodrigues
Eng.º Civil Diego Augusto De Cesaro
Eng. Civil / Eletrotéc. Fábio Ferreira
Acad. Eng. Civil Amanda Bianchini

SOLUÇÕES EM ENGENHARIA

PROJETO

ESTRUTURAL

RESPONSÁVEL PELO PROJETO

Eng.º Civil Fabricio Ferreira Rodrigues
CREA/SC 41413-0

RESPONSÁVEL PELA EXECUÇÃO

OBRA / PROPRIETÁRIO

Vivendas De Barcelona
Rua Salvador e Rua Xingu, Bairro Brasília
Criciúma - Santa Catarina

ASSUNTO:

VIGAS TIPO 1

DATA
JAN/13

OBRA
008/CR1

ÁREA
7.846,24m²

ESCALA
1/50

DESENHO
Diego Augusto

FOLHA
33/35

Rua Candido Cesar Freire Leão, 453 - Vila Moema - cep 88705-040 - Vila Moema - Tubarão - SC
FONE/FAX: (048) 3626-1881 - cabreira.rodriques@brturbo.com.br